

City Hall | Lower Ground Floor Redesign

City Architects | June 2020

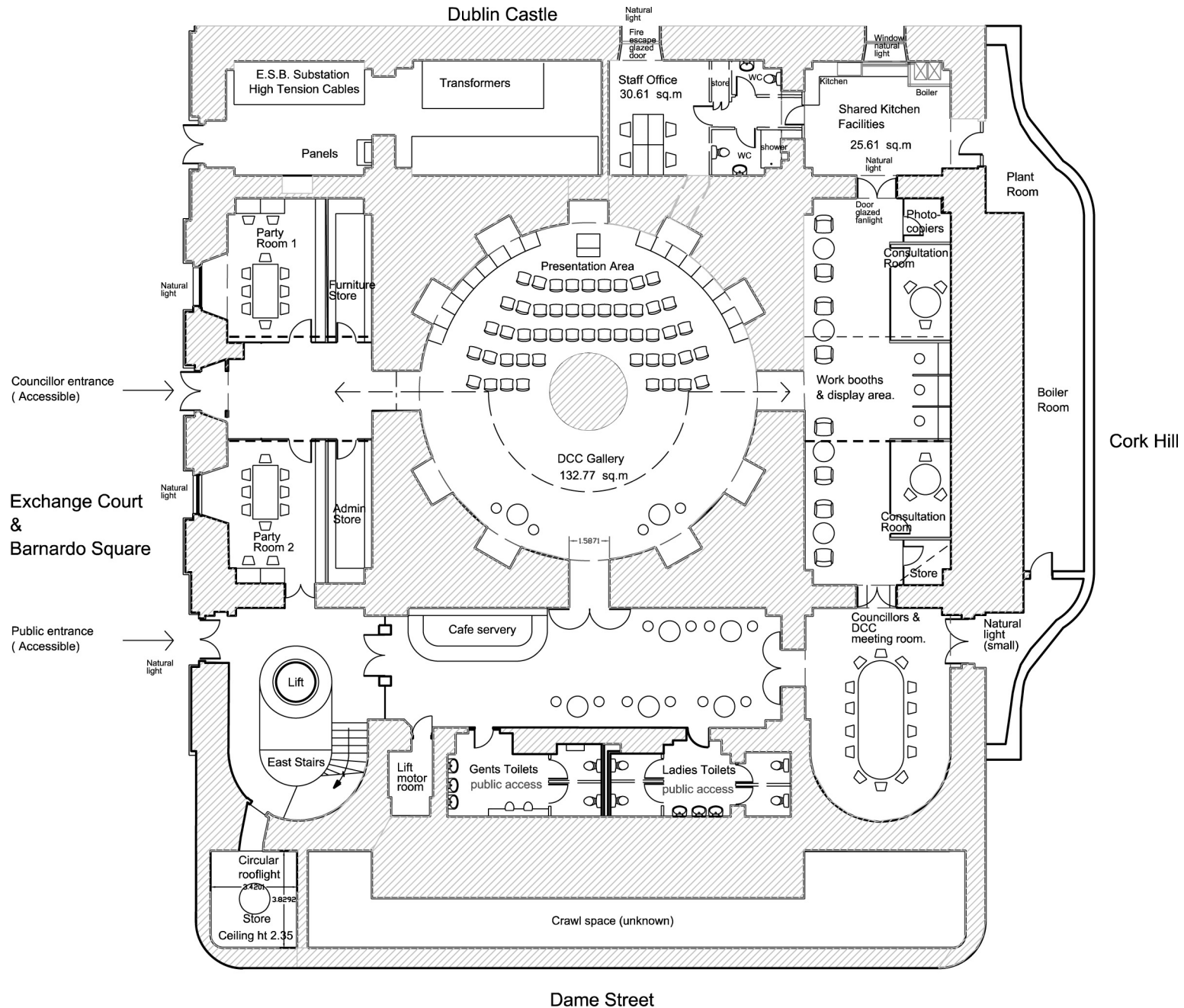
DRAFT



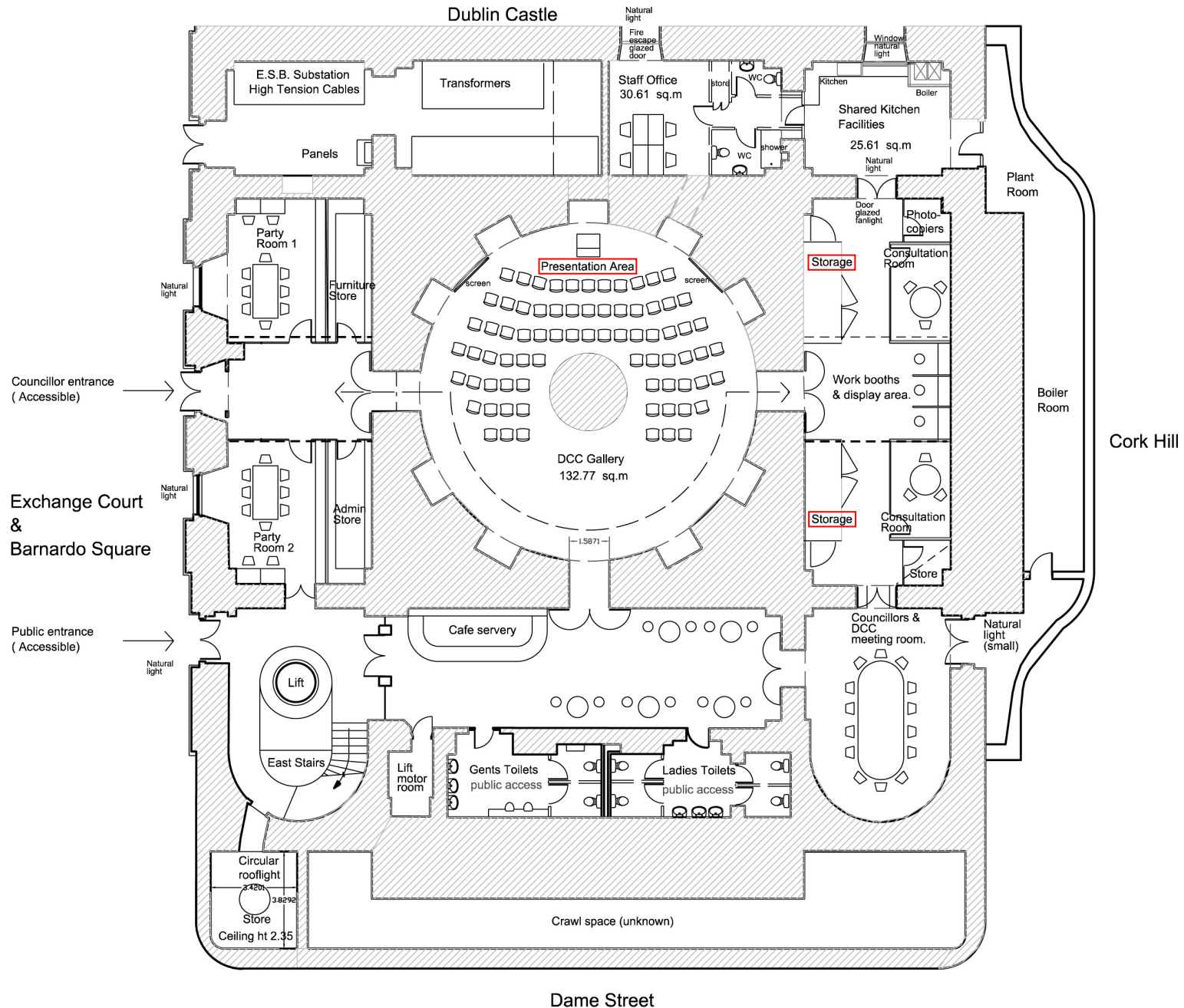
Comhairle Cathrach
Bhaile Átha Cliath
Dublin City Council

Rannóg
Ailtire
na Cathrach

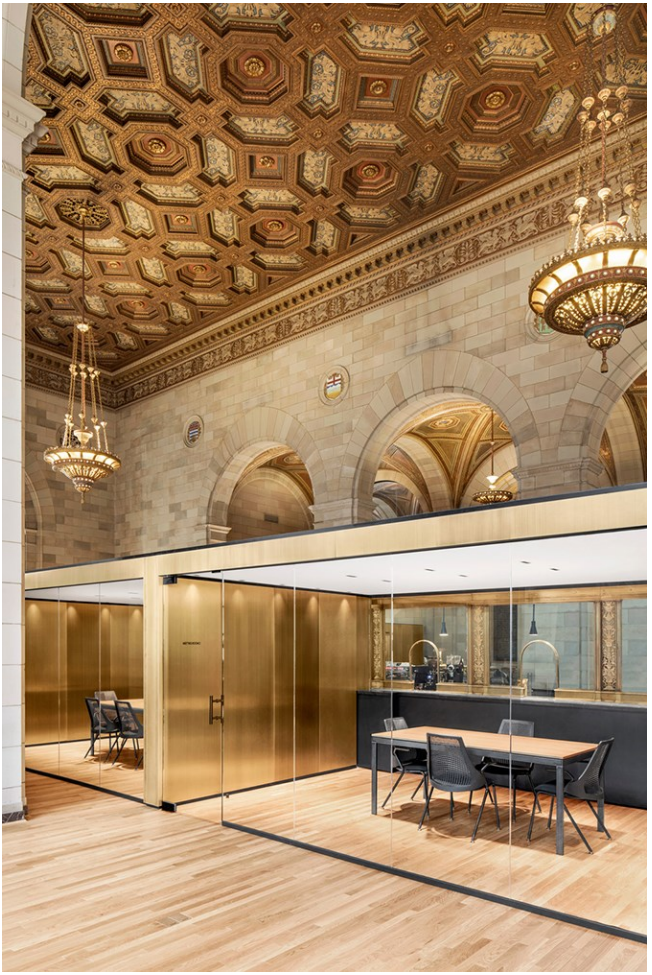
City
Architects
Division



1. Sketch Proposal A



2. Sketch Proposal B (additional seating & storage)

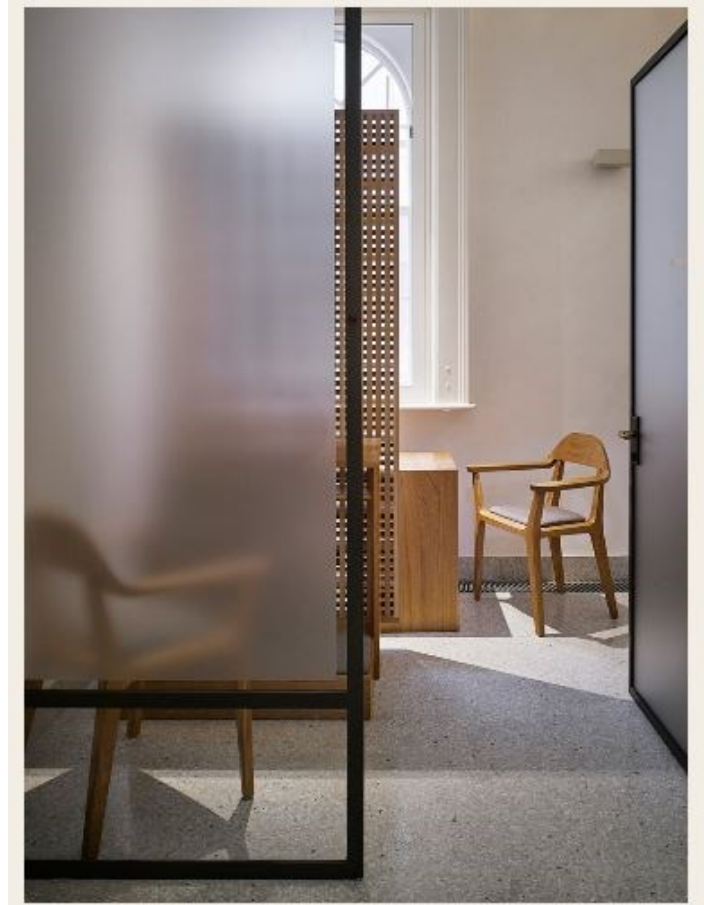


3. Consultation Rooms (self-contained / bespoke)



4. Individual Work (concentration booths)

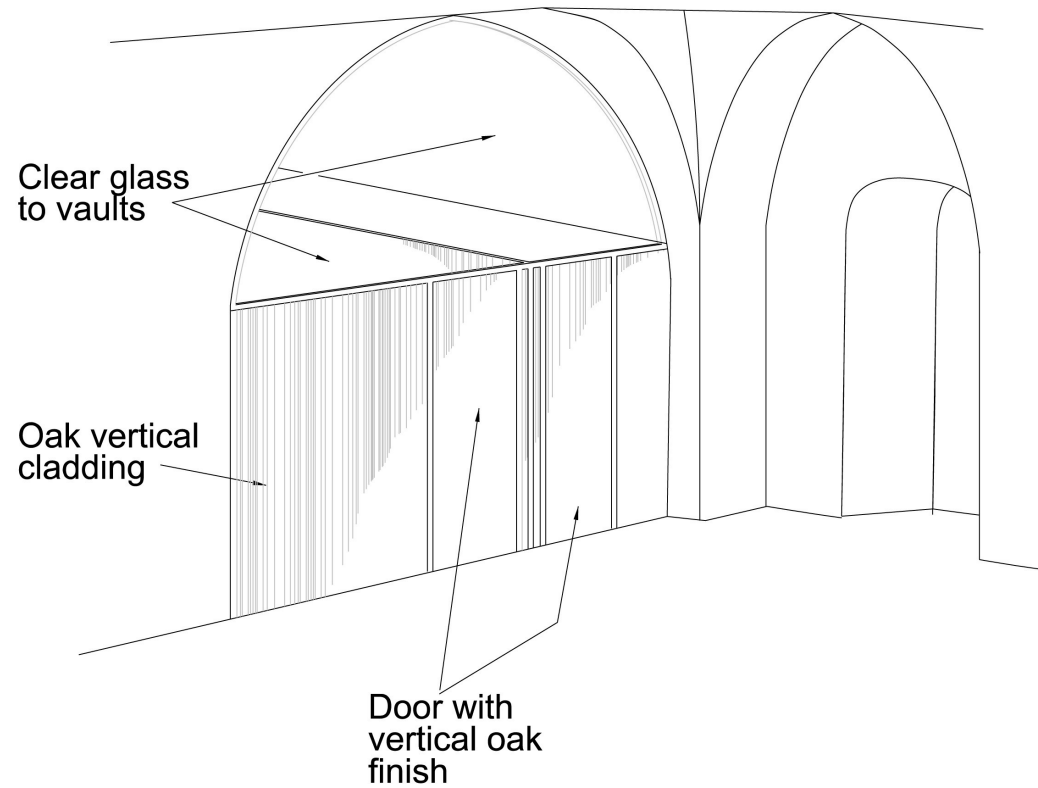
Reference Image Source: St. Teresa's Church, Clarendon St., Dublin
(John McLaughlin Architects)



5. Glazed Screens (privacy & light)

Rannóg
Ailtire
na Cathrach

City
Architects
Division



6. Sketch Proposal A&B (screen type at new entrance lobby)



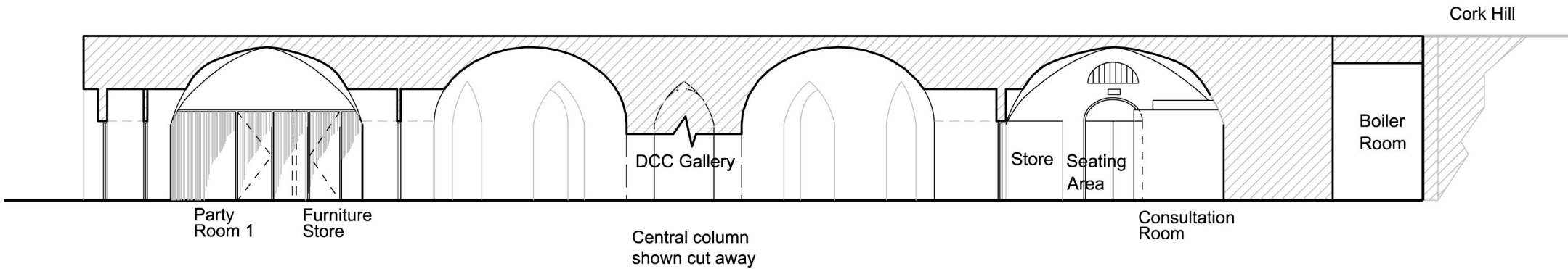
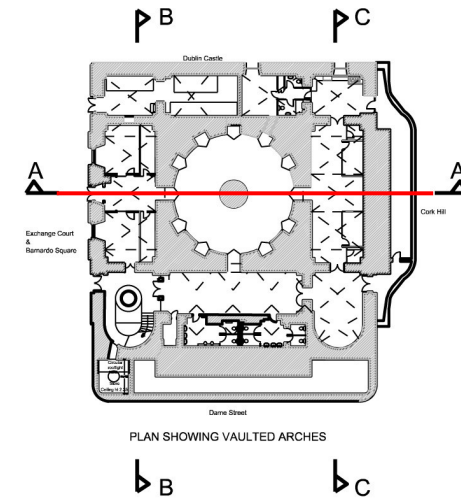
Bar area prior to redesign works in 2018



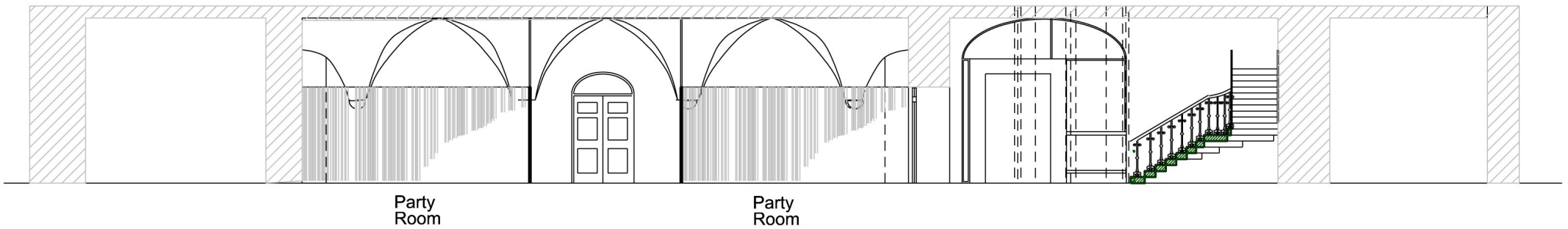
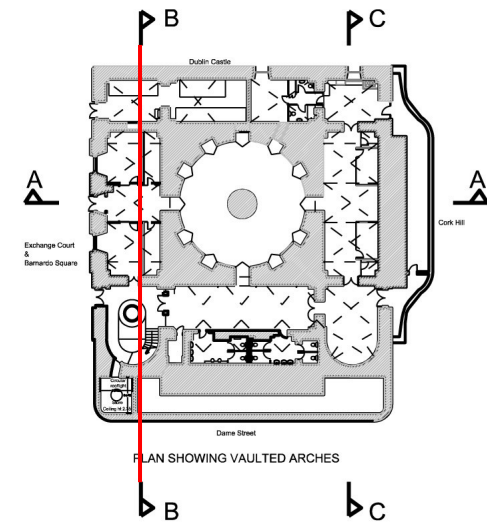
7. DCC in-house design, fabrication & installation (new bar & servery)



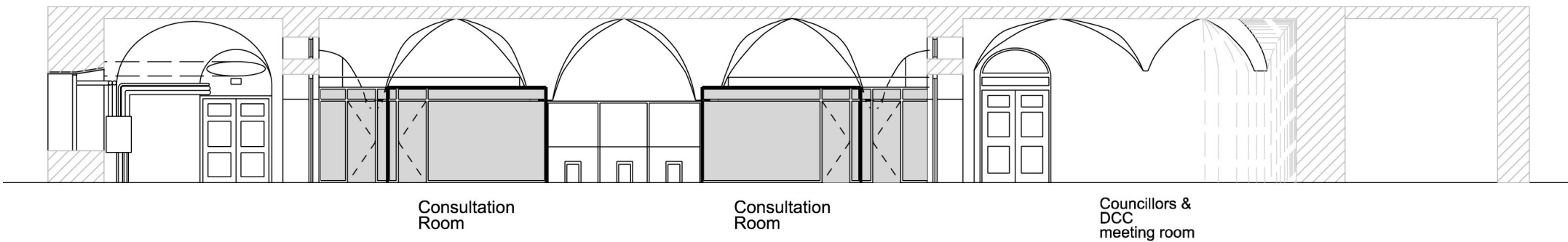
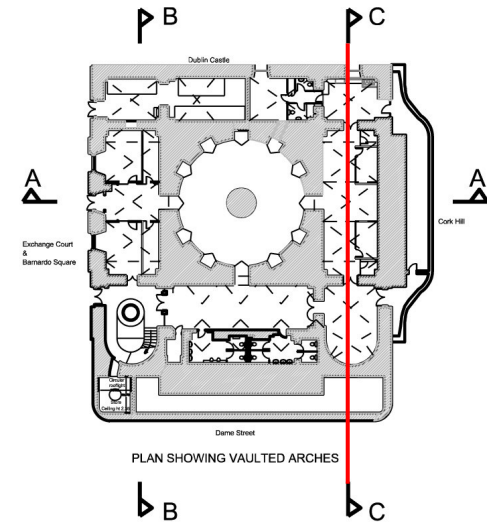
8. Quality natural, handcrafted & Irish materials (new bar & servery)



9. Sketch Proposal B (section A-A through lobby, gallery & consultation area)



10. Sketch Proposal A&B (section B-B through party rooms, lobbies & stairwell)



11. Sketch Proposal A&B (section C-C through consultation area)



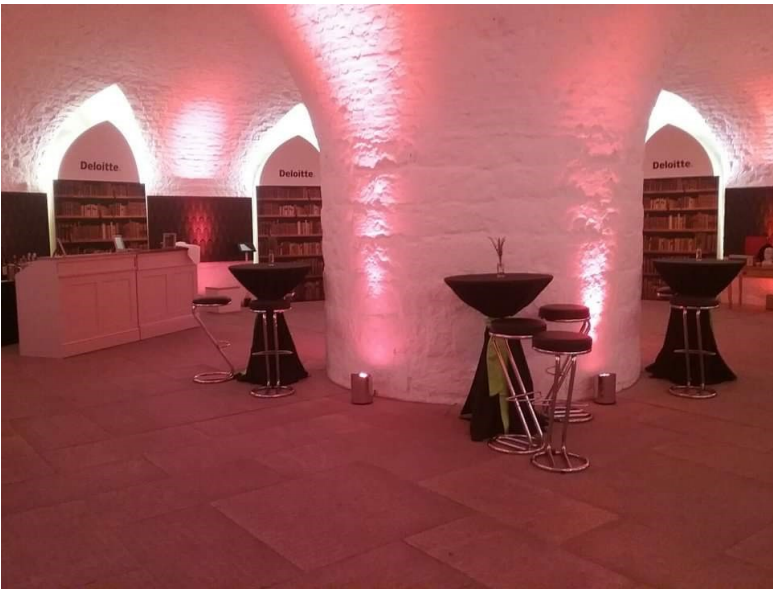
12. Materials (contemporary / high quality)



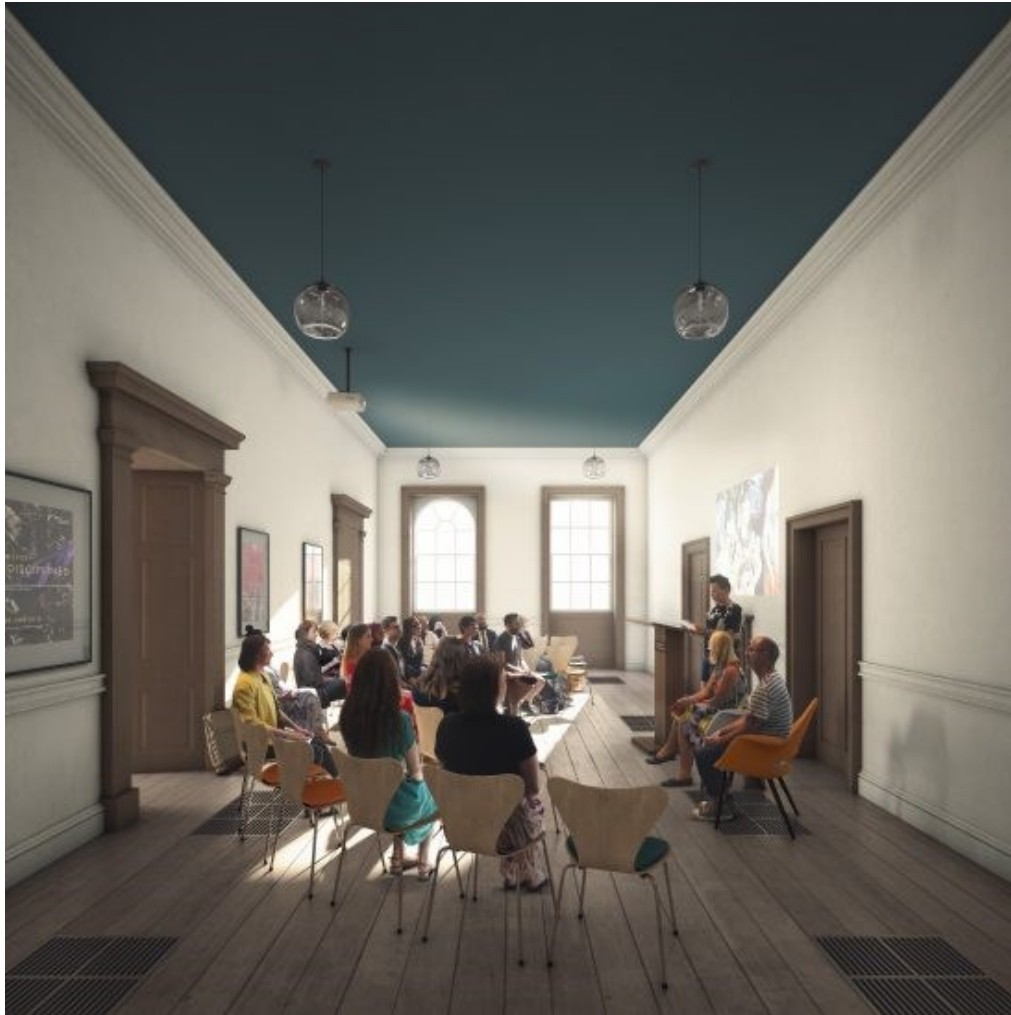
13. Storage (vault arch / light)



14. Storage (door height / light)



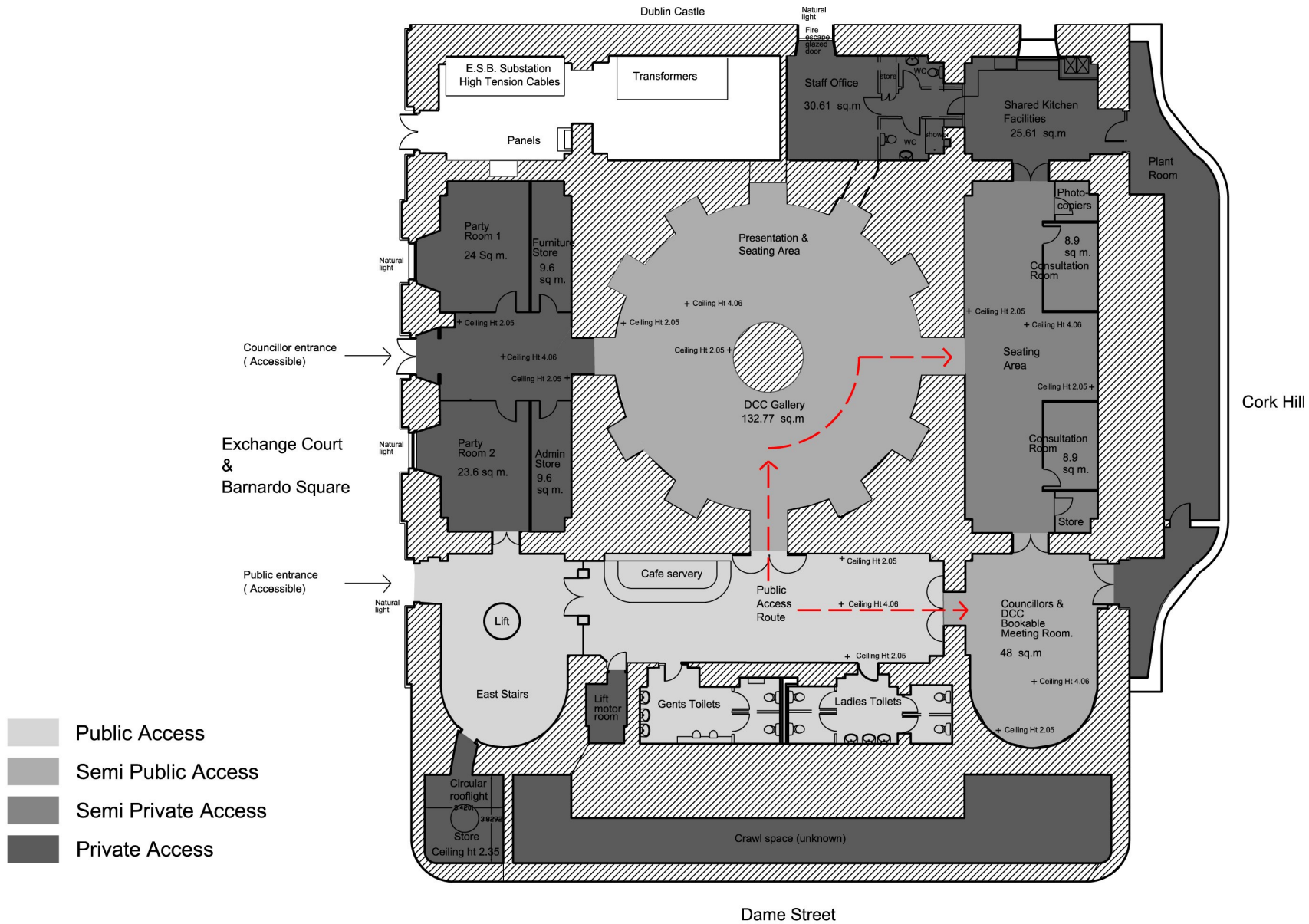
15. Gallery Space (seating / use options)



16. Seating Options (informal / narrow)



17. Services (surface-mounted / industrial)



18. Access & Areas

Sketch Proposal A & B

Review:

- Flow through spaces / interface / separation
- Storage—use / size / location
- Exhibits—permanent display / security
- Cost— high quality materials / finishes

Next Steps:

- Planning Status
- Conservation Officer Consultation
- DCC QS Cost Plan
- M&E Services Review